

DMG MORI Thailand Special Promotion

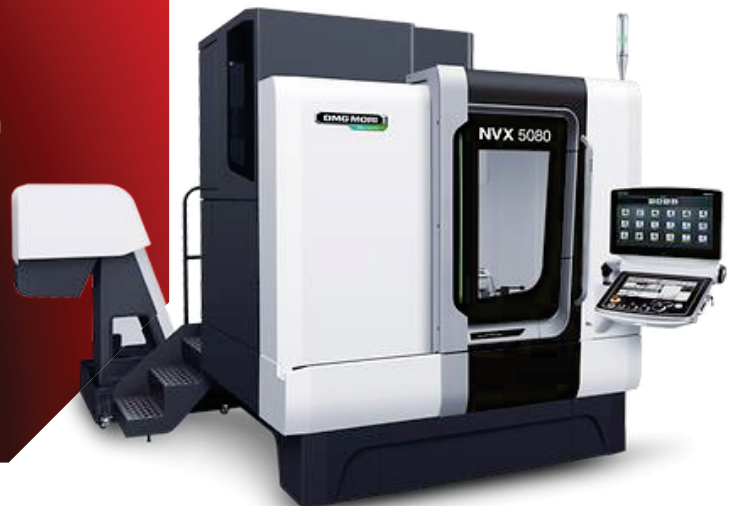
# NVX 5080 2<sup>nd</sup> Generation

Only **1** unit available

Stock Machine in  
DMG MORI Thailand

## Best-ever high-precision vertical machining center

1. Optimized machine construction ensures high rigidity and high precision machining.
2. Superb cutting performance achieved with high performance spindles, speedMASTER and powerMASTER.
3. Best surface quality - highest accuracy for any machining operations
4. Unprecedented rigidity and accuracy with Ultimate hybrid structure



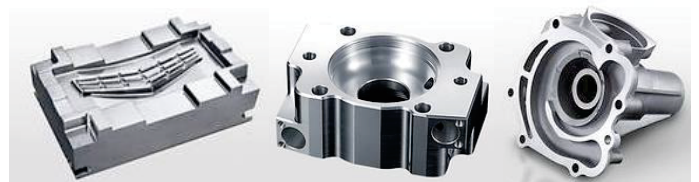
### Specifications :

- + NVX 5080 <2nd Generation>
- + Control M730UM with CELOS - ERGOline Touch
- + High-speed spindle 20,000 min<sup>-1</sup>, 30/ 18.5 kW
- + BT 40 (two-face contact)/ Grip MAS <BT40 two-face contact>
- + Tool storage capacity 30 tools
- + Measuring system (spindle) optical signal transmission type touch sensor (RENISHAW, OMP60)
- + Measuring system (table) touch sensor (Magnescale) + tool setter function (tool length only)
- + Water-glycol chiller (Chilling unit) (install on machine type) Manual pulse generator (separate type)
- + MPC (Machine Protection Control) and MVC (Machine Vibration Control)
- + High-speed and high-precision function II (high-precision contour control)
- + Program restart
- + Additional workpiece coordinate systems 48 sets
- + Coordinate system rotation
- + SSS control

### NVX 5080 2<sup>nd</sup> Generation

Best -ever high-precision vertical machiningcenter

Max. X travels	800 mm
Max. Y travels	530 mm
Max. Z travels	510 mm
Max. table load	1,000 kg
Table size	1.100 x 600 mm



Contact us for more information

#### Sumipol Corporation Limited

284 On-Nut Road, Kwaeng Prawet, Khet Prawet, Bangkok 10250  
Telephone :0-2762-3000 Fax : 0-2026-6260  
Phone : 094-254-6269 Email : anon-p@sumipol.com

