

For CVT Grooves / High Precision Electroplated Wheel Formaster Premium

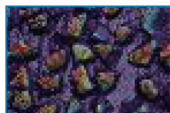
Longer Tool Life for Hardened Steel Parts such as Gears

This CBN electro-deposited wheel has a long service life in the process of hardened steel components such as gears by improving form-stability.



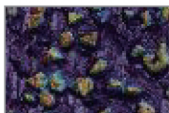
[Results]

Formaster Premium



Maintains Abrasive Grains

Conventional Wheel



Abrasive Grains Drop Out or Crushed

■ Features

- The number of workpieces that can be machined can be increased while maintaining shape accuracy by making the abrasive grains tougher and stabilizing the amount of grain protrusion. (longer wheel life)

■ Applications

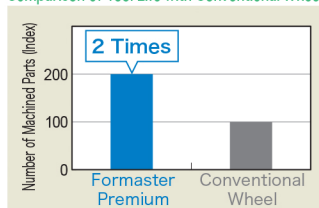
- High-precision Profile Machining of Hardened Steel Parts

■ Machining Examples

- Comparison of Life with Conventional Products

- | | |
|-------------------------|---------------------------------------------|
| 1) Wheel Specification | Outer Diameter : $\Phi 44$ |
| | Shape: R groove |
| | Grit Size : #170 |
| 2) Workpiece | Hardened Steel |
| 3) Machining Conditions | Peripheral Speed : 40 m/s |
| | D.O.C. : 0.15 mm |
| | Feed Rate : 100 mm/min |
| 4) Life Determination | Surface Roughness : $R_z > 3.2 \mu\text{m}$ |

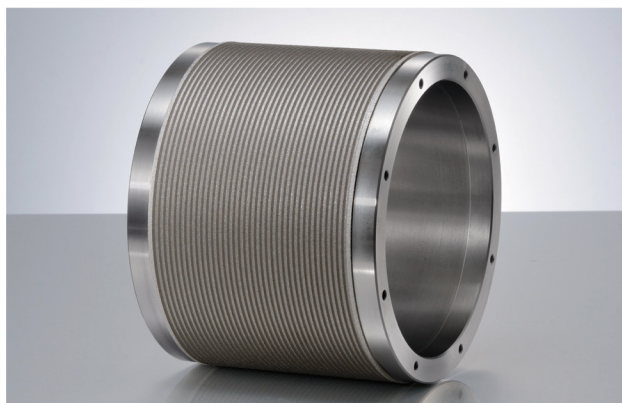
Comparison of Tool Life with Conventional Wheel



For Rubber Belts / PSL Wheel

Ideal for Materials that Tend to Cause Loading such as Rubber and Resin

It has high abrasive grain holding power, together with large abrasive grain protrusion amount and abrasive grain spacing, providing excellent sharpness and discharge performance of chips.



■ Features

- Ideal for machining that tends to cause loading due to deposition of chips such as rubber and resin.

■ Applications

- Machining of various automotive rubber belts

For Glass Beveling / Beveling Wheel

High Quality Surface

The employment of bond that has high grain holding power provides long-lasting sharpness to produce high quality surfaces.



■ Features

- High quality surface produced.
- Bonds are lined up to meet various machining conditions and workpieces.

■ Applications

- Beveling of automotive glass, ceramics and magnetic materials