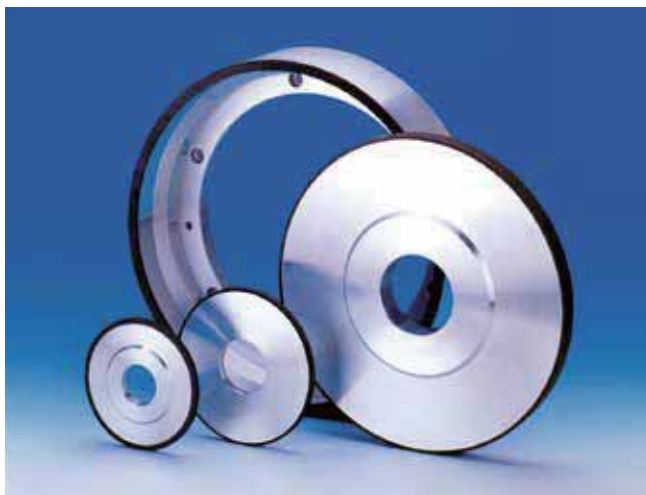


Hybrid Wheel



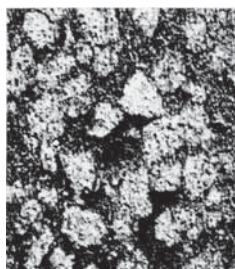
Suitable for cermet grinding

Features

The Hybrid Wheel was developed for high-efficiency grinding of cermet, a material that is hard-to-cut.

- Excellent grinding ability and long tool life due to effect by micro-segment of special metal bond
- Good surface roughness and minimal chipping due to resin bond matrix

Micro-segment structure

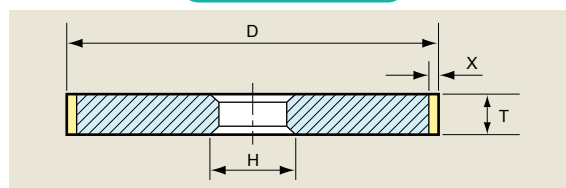


Applications

- Peripheral grinding of cermet, surface honing, grooving and chipbreaker grinding, etc.
- Various grinding including cemented carbide and ceramics

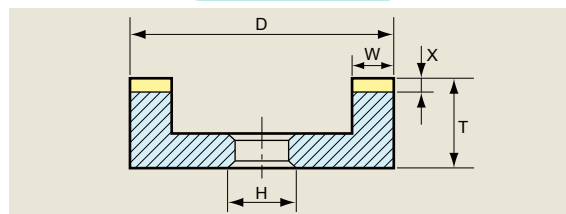
Type and standard size

Straight Type



Item Number	D	T	X	H
HS050	50	3,5,8,10, 15,20	3,5	As requested
HS075	75			
HS100	100			
HS125	125			
HS150	150			
HS175	175			
HS180	180			
HS200	200			
HS250	250	10,15,20, 25,30		
HS300	300			
HS350	350			
HS400	400			
HS500	500			
HS600	600			

Cup Type



Item Number	D	T	X	H
HC050	50	3,5,8,10	3,5	As requested
HC075	75			
HC100	100			
HC125	125			
HC150	150			
HC175	175	5,8,10,15		
HC200	200			
HC250	250			
HC300	300			
HC350	350			
HC400	400			
HC500	500			

*All cup wheel types are available

Performance of Hybrid Wheel

		Hybrid	Conventional resin bond
Wheel	Size	Ø350×12W×6X, 6A2	
	Specification	SD325-HB	SDC325R75B
Work Material	Size	12.7□×3,175	
	Specification	TIC-TIN Cermet	
Grinding Condition	Machine	TA outer grinder	
	Peripheral Speed	1600m/min	
	Cutting Speed	Side	3mm/min
		R part	40mm/min
	Coolant	Water soluble	
Result	Current Value	9A	10A
	Dress Interval	300~400%	100%
	Processing Quantity	150~200%	100%
	Surface Roughness	Good	Good
	Chipping	Good	Good